

SLUG TRAP

**Catch slugs without poison or chemicals!
Safe, easy, and effective!**



The product contains recycled material.

Catch slugs in your
**garden, lawn,
flower beds,
greenhouses,
orchards ...**

Prepare the bait
using ingredients
you usually have at
home: **beer, orange
juice, yeast, salt ...**


BIOPLAST

SLUG TRAP



Our eco-friendly slug trap effectively attracts and captures slugs before they damage your plants. Its innovative design allows simple and safe slug trapping while being environmentally friendly and harmless to pets.

INSTRUCTIONS FOR USE

1

Fill the trap with 250 ml of fresh beer (with alcohol) and two teaspoons of salt. **Tip:** Add two teaspoons of yeast for even better results.)

Alternative baits:

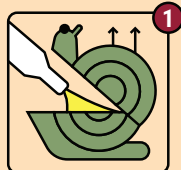
- Water (250 ml), 2 tsp sugar + yeast, 1 tsp flour.
- Orange juice (250 ml) + 2 tsp yeast.
- 1 tbsp dog, cat, or fish food or fish meal dissolved in 250 ml water.

2

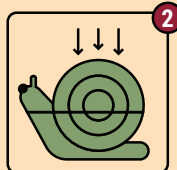
Place the trap where slugs are most active – near your garden or plants you wish to protect. **One trap effectively covers an area of approx. 30 m².**

3

IMPORTANT: Slugs are attracted to fresh beer, so set the trap in the evening, check it in the morning or within 48 hours, and refill as needed.



Fill with bait (preferably in the evening).



Attach the lid.



It's slug-catching time!



Empty the trap within 48 hours.



SIMPLE: Place the trap on a flat surface in your garden, lawn, flower bed, greenhouse, vineyard, or orchard.

NATURAL: Use a natural bait – beer – which attracts slugs.

EFFECTIVE: The scent of yeast and malt in the beer lures the slugs into the trap, where they remain caught.

Warning: The Roman snail (*Helix pomatia*) is a protected species and must not be caught. We recommend using the trap only for non-native or invasive slug species that pose a threat to your plants. Note: If Roman snails are causing problems, pick them up and relocate them to their natural habitat.